



**ALL-TERRAIN LITTER VACUUM**

**LN50**

**Compact urban cleaning vehicle**

 **Madvac®**

Sourcewell   
Formerly NJPA

 **canoe**  
procurement group of canada

awarded contract vendor

[www.madvac.com](http://www.madvac.com)

*Technical specs are subject to change without prior notice*





From concrete to grass,  
the LN50 can tackle all types  
of urban terrain with ease

- Parks
- Sidewalks
- Bike & pedestrian lanes
- Parking lots
- Curb side
- Alleys
- Pathways
- Alongside buildings



LN50 is the  
perfect all-  
terrain litter  
solution for

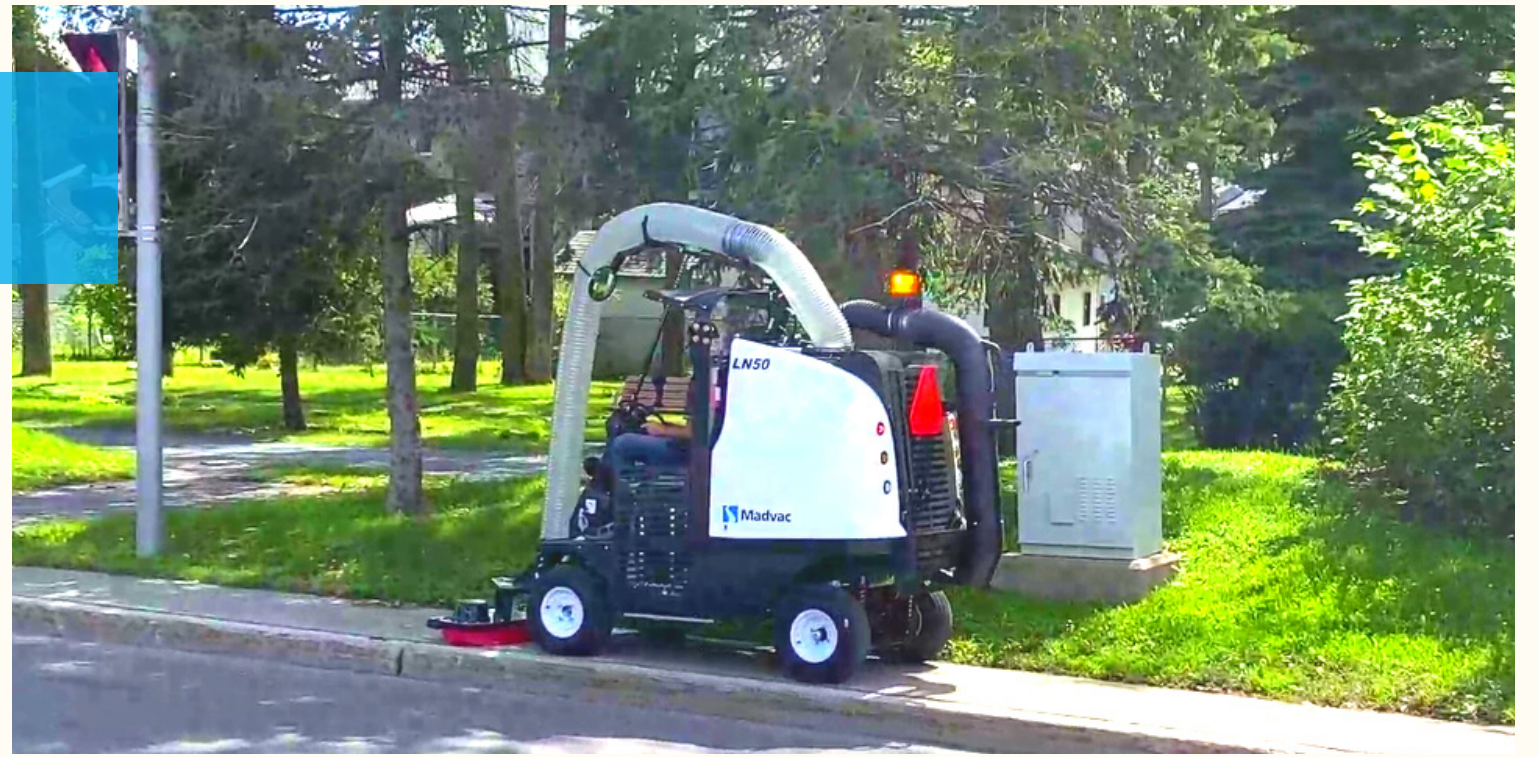
- Cities & municipalities
- Outdoor cleaning contractors
- Airports & seaports
- Transit authorities
- Healthcare services
- Distribution centers
- Shopping malls
- Educational & sports facilities
- Manufacturing facilities
- Amusement parks
- Casinos
- Military
- Correctional facilities





# Key Attributes

- LN50 is the closest equivalent to the now-discontinued Tennant ATLV 4300;
- Productivity 6 times faster than manual litter picking;
- Collects litter dry, humid or wet;
- Effortless litter removal using 48 in. (1219 mm) wide vacuum head;
- 15 ft. (4.57 m) retractable wander hose for hard-to-reach areas;



- A CDL permit is not required to operate this machine;
- Fully street legal lighting;
- 10 to 12 year lifespan;
- OEM spare parts shipped within 48 hours;
- Madvac has a 30+ years track record of success – when your machine is due for replacement we'll still be around.

## Built to suit your needs

*Configure the LN50 according to your specific requirements*

- |   |   |
|---|---|
| • 48 in. (1219 mm) vacuum head                                | • Water mist system (additional dust control) |
| • Retractable wander hose                                     | • Overhead sunshield roof                     |
| • Litter collector bags or bagless debris system (Kevlar bin) | • Heated seat                                 |
|   | • Floor-mounted heater                        |
|   | • Tire flatproofing                           |
|   | • Fire extinguisher                           |

To request a quote [www.madvac.com](http://www.madvac.com)  
Diesel / Gas -> LN50 -> Request a quote







# Madvac LN50

## Data & Performance Information

### Capacities

Fuel tank	10.2 gal. (39 L)
Hydraulic system	12.5 gal. (48 L)
Litter capacity	75 gal. (284 L)

### Engine Data

Model	Kubota Diesel D902-TE4
Displacement	54.8 cu.in. (898 cc)
Gross rated power	24.8 hp (18.5 kW) @3200 rpm
Legislation compliance	EPA Tier 4 Final
Air cleaner	2-stage Donaldson with restriction indicator

### Litter Collection System

Type	Straight-through system compacts litter at 2:1 ratio
Container construction	16 gauge powder-coated steel
Vacuum hose	7 in. (178 mm)
Wander hose	Diameter: 6 in. (152 mm); length: 15 ft. (4.57 m)

### Frame and Body

- Heavy gauge steel body on a welded 1/4 in. (6.35 mm) structural steel frame
- Electrostatic powder-coated paint

### Dimensions

Width	48 in. (1219 mm)
Length	96 in. (2438 mm)
Height	92 in. (2337 mm)
Wheelbase	69 in. (1753 mm)
Ground clearance	10 in. (254 mm)

### Vacuum System

Vacuum rating	1600 CFM
---------------	----------

### Controls

Steering	Adjustable tilt steering column
Motion control	Heavy duty hydrostatic

### Traction

Drive	Front wheel drive
Forward speed	12 mph (19 km/h)
Tires (all 4 wheels)	Regular 20.5 in. (521 mm); Turf 20 in. (508 mm)

Brakes	Front hydrostatic brake; rear mechanical disc parking brake
Gradeability	11.3 degree (20%) with full & empty hopper

Curb weight	2574 lbs (1168kg)
-------------	-------------------

### Suspension

Front	Leaf spring
Rear	Leaf spring



Proud manufacturer of the Madvac product line

**Telephone:**  
• 1-855-651-0444 (toll free - US/Canada)  
• 1-450-651-0444 (international)  
**Fax:** 450-651-0447  
**Email:** info@exprolink.com

**Address:** 2170 Rue de la Province  
Longueuil QC  
Canada J4G 1R7  
**Website:** [www.madvac.com](http://www.madvac.com)  
**Sourcewell** (US) and **Canoe** (Canada) contract vendor  
number: **122017-EXP**