

# ALL-TERRAIN LITTER VACUUM LR50

Compact urban cleaning vehicle



 **Madvac**®

Sourcewell  
Formerly NJPA

 **canoe**  
procurement group of canada

awarded contract vendor



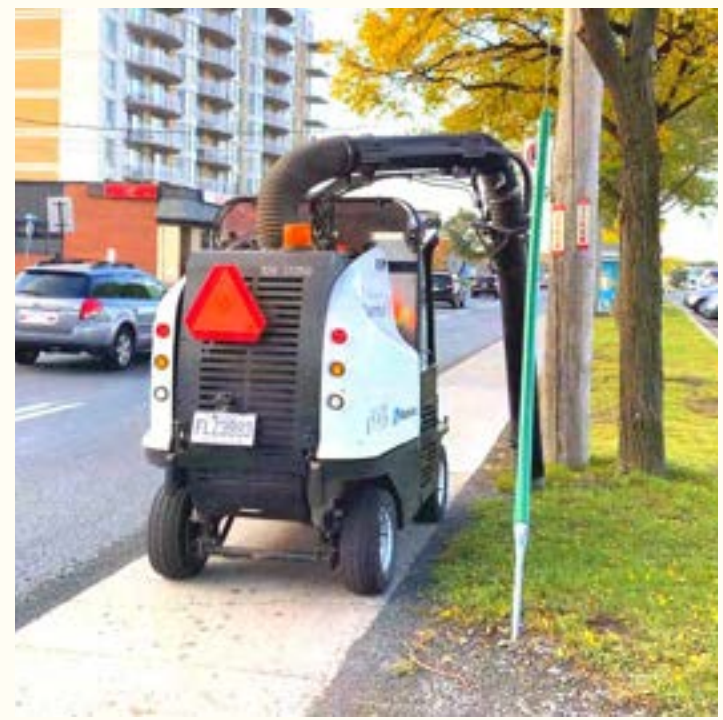
[www.madvac.com](http://www.madvac.com)

*Technical specs are subject to change without prior notice*



# From concrete to grass, the LR50 can tackle all types of urban terrain with ease

- Parks
- Sidewalks
- Bike & pedestrian lanes
- Parking lots
- Curb side
- Alleys
- Pathways
- Alongside buildings



Ergonomic 6-position robotic joystick allows effortless displacement of the boom



## LR50 is the perfect all-terrain litter solution for

- Cities & municipalities
- Outdoor cleaning contractors
- Airports & seaports
- Transit authorities
- Healthcare services
- Distribution centers
- Shopping malls
- Educational & sports facilities
- Manufacturing facilities
- Amusement parks
- Casinos
- Military
- Correctional facilities







## Built to suit your needs

*Configure the LR50 according to your specific requirements*

- 48 in. (1219 mm) vacuum head
- Retractable wander hose
- Litter collector bags or bagless debris system (Kevlar bin)
- Water mist system (additional dust control)
- Enclosed cab with heated or non-heated windshield and vinyl doors
- Heated seat
- Floor-mounted cab heater
- Fan for operator comfort
- Rear-view camera
- Tire flatproofing
- Fire extinguisher



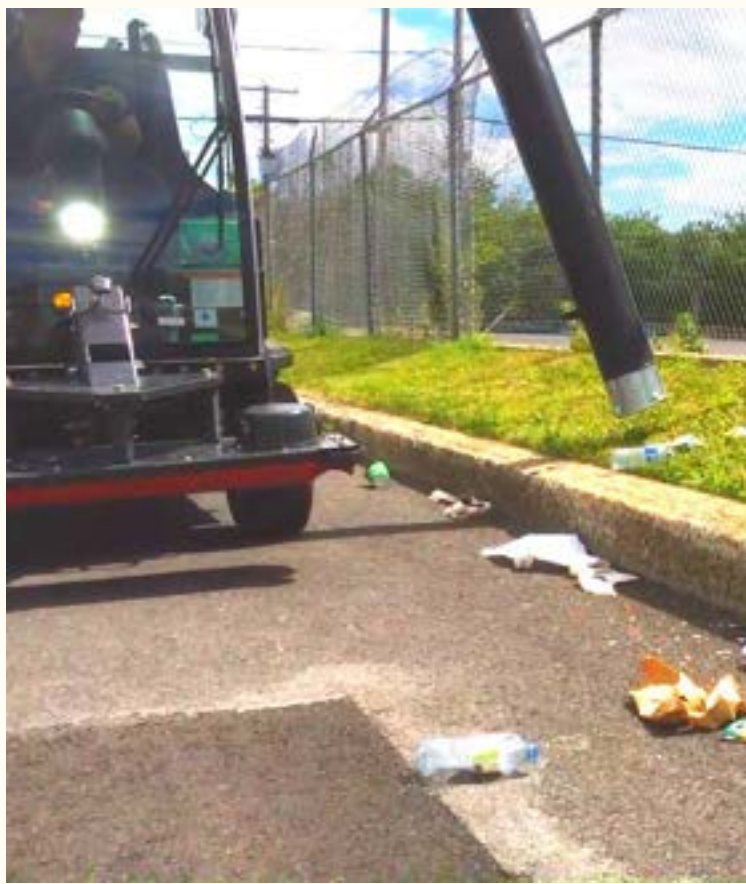
## Key Attributes

- Robotic vacuum arm with 6-position joystick makes litter picking easy and injury free;
- Closed cabin (vinyl doors) with climate control options for operator comfort;
- Productivity 6x faster than manual litter picking;
- Collects litter dry, humid or wet;
- Effortless litter removal using 48 in. (1219 mm) wide vacuum head;
- 15 ft. (4.57 m) retractable wander hose for hard-to-reach areas;
- A CDL permit is not required to operate this machine;
- Fully street legal lighting;
- 10 to 12 year lifespan;
- OEM spare parts shipped within 48 hours;
- Madvac has a 35+ years track record of success – when your machine is due for replacement we'll still be around.

To request a quote [www.madvac.com](http://www.madvac.com)  
Diesel/Gas -> LR50 -> Request a quote







# Madvac LR50

## Data & Performance Information

### Capacities

Fuel tank	10.2 gal. (39 L)
Hydraulic system	12.5 gal. (47 L)
Litter capacity	75 gal. (284 L)

### Engine Data

Model	Kubota Diesel D1105-E4B (EPA Tier 4 Final)
Displacement	68.53 cu.in. (1123 cc)
Gross rated power	24.8 hp (18.5 kW) @3200 rpm
Legislation compliance	EPA Tier 4 Final
Air cleaner	2-stage Donaldson with restriction indicator

### Litter Collection System

Type	Straight-through system compacts litter at 2:1 ratio
Container construction	16 gauge powder-coated steel
Vacuum hose	7 in. (178 mm)
Wander hose	Diameter: 6 in. (152 mm); length: 15 ft. (4.57 m)

### Frame/Body

- Heavy gauge steel body on a welded 0.25 in. (6.35 mm) structural steel frame
- Electrostatic powder-coated paint

### Dimensions (\*base model)

Width	48 in. (1219 mm)
Length	99 in. (2515 mm)
Height	100 in. (2540 mm)
Wheelbase	69 in. (1753 mm)
Ground clearance	10 in. (254 mm)

### Vacuum System

Vacuum rating	1800 CFM
---------------	----------

### Controls

Steering	Power assisted
Motion control	Heavy duty hydrostatic

### Traction

Drive	Front wheel drive
Forward speed	12 mph (19 km/h)
Tires (all 4 wheels)	Regular 20.5 in. (521 mm); turf 20 in. (508 mm)

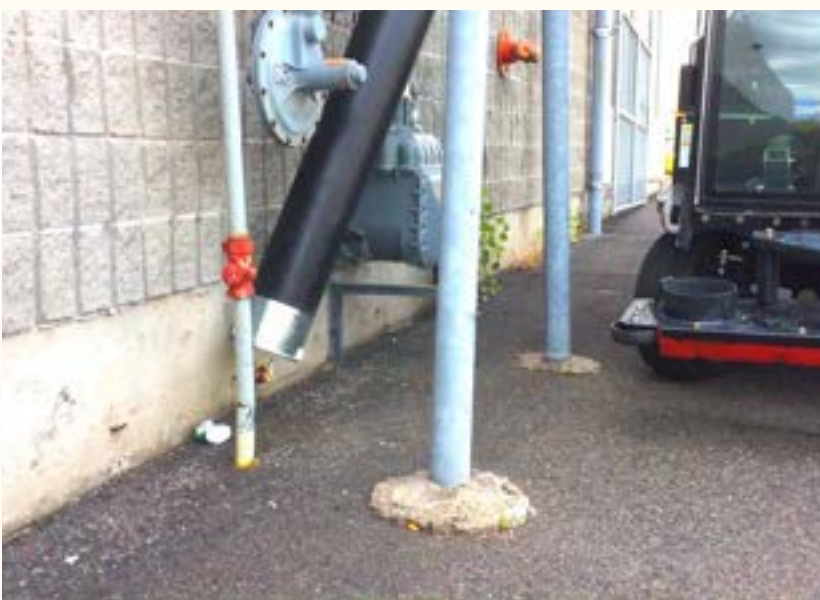
Brakes	Front hydrostatic brake; rear mechanical disc parking brake
--------	---

Gradeability	11.3 degree (20%) with full & empty hopper
--------------	--

Curb weight	2910 lbs (1320 kg)
-------------	--------------------

### Suspension

Front	Leaf spring
Rear	Leaf spring



Proud manufacturer of the Madvac product line

**Telephone:**  
• 1-855-651-0444 (toll free - US/Canada)  
• 1-450-651-0444 (international)  
**Fax:** 450-651-0447  
**Email:** info@exprolink.com

**Address:** 2170 Rue de la Province  
Longueuil QC  
Canada J4G 1R7  
**Website:** [www.madvac.com](http://www.madvac.com)  
**Sourcwell** (US) and **Canoe** (Canada) contract vendor  
number: **093021-EXP**