



HAAKER
TOTAL CLEAN

Sweepers · Scrubbers · Pressure Washers · Utility Carts

Nobody Works Harder for You Than **HAAKER**



Legacy

For half a century, HAAKER Equipment has been the premiere supplier of public works and facilities maintenance equipment in California, Nevada, and Arizona.

Values

At HAAKER, we help our customers win by delivering unrivaled product and applications expertise, first-class customer support, and an extensive network of regional locations with service capability and parts inventory.

Mission

Our success depends on yours. Everything we do is designed to deliver an amazing customer experience for the full service life of your equipment. Put us to the test and you'll see that **Nobody Works Harder for You Than HAAKER.**



POWERBOSS

SWEEPERS & SCRUBBERS

scan here →

to view our full line of equipment



Here at Total Clean, we are a proud supplier of PowerBoss industrial cleaning equipment. These powerful sweepers and scrubbers are designed to provide sustainable and innovative solutions for indoor and outdoor applications.



ATLAS

- 64" sweep path
- 60" multilevel high dump
- Safety vision dump window
- Power control dust collection system
- Heavy-duty design



ARMADILLO 9X/10X

- All steel construction
- Full service 180° swing-out engine
- Up to 84" sweeping path (dual side brooms)
- Dual synthetic panel filters
- Oversized curb climbing tires



NAUTILUS

- Easy access debris tray
- Adjustable squeegee feature
- Edge scrubbing
- Stainless steel scrub deck
- LPC, gas, diesel, or electric powered



SCRUBMASTER

- No tools - Brush/Squeegee change
- Stainless steel components
- Onboard diagnostics
- One-touch all function buttons



WALK-BEHIND

- Cylindrical/Disc brushes and pads
- Dual brush vacuum motors
- Direct brush release system
- Easy, ergonomic operation



50 + years
of cleaning
experience

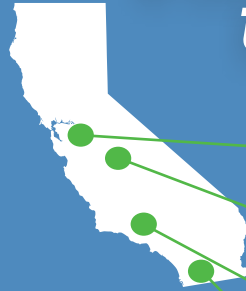




Committed to
Environmental
CLEANING



6 LOCATIONS *to serve you*



Hayward, CA

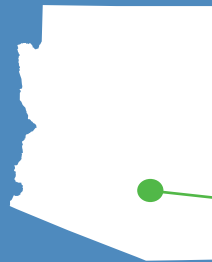
Tulare, CA

La Verne, CA

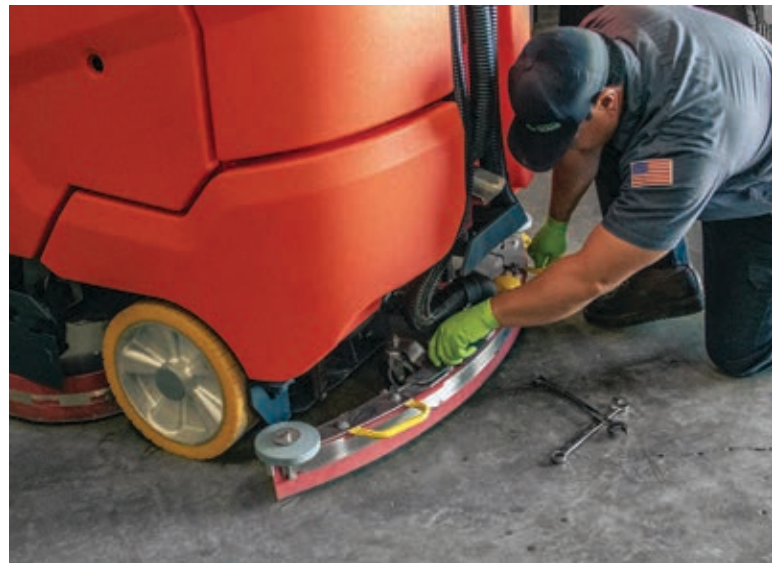
San Diego, CA



Las Vegas, NV

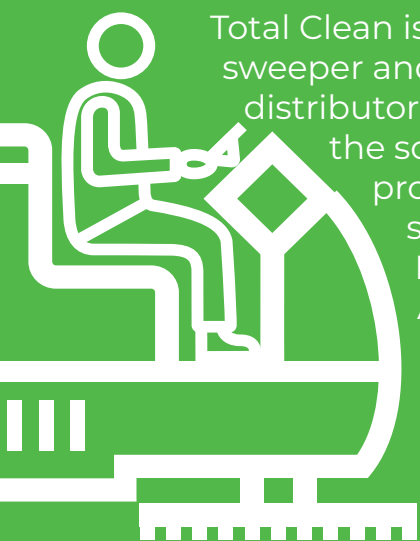


Phoenix, AZ





proud to be the #1
distributor



Total Clean is the leading sweeper and scrubber distributor for the southwest. We proudly offer our services in California, Nevada, and Arizona through our wide range of industrial cleaning equipment, parts, and maintenance.



NILFISK - ADVANCE

SWEEPERS & SCRUBBERS

scan here →
to view our full line of products



SW8000

- Heavy-duty, outdoor sweeper
- Up to 77" sweeping path
- Dust Guard™ fog system
- 60" multilevel high dump



ROBOTIC FLOORCARE

- Autonomous scrubber
- Consistent cleaning
- Auto fill-in feature
- Service and training included



SC5000

- Ease of operation
- SmartFlow™ technology
- SmartKey™ & supervisor key settings
- Maximum operator safety



SC6000

- SmartFlow™ technology
- Maximum operator safety
- No tools - Brush/Squeegee change
- SmartKey™ system



7765

- Large sweep & scrub path
- 100 GL recovery/solution tanks
- Designed for up to 600 lbs of downward brush pressure



CS7010

- Hybrid technology and Ecoflex™
- ClearView™ sightlines
- SmartFlow™ tilt out recovery tank
- Heated water, pressure washer
- LPG, gas, diesel, or electric powered



POWER *sweeping*

Visit us online to learn more
totalcleanequip.com





NITEHAWK

STREET & PARKING LOT SWEEPERS

Scan To
See More



RAPTOR II

- Advanced hydraulics
- "Stealth Sweeping" system
- 5-year warranty
- Lowest cost of operation
- Stainless steel hopper
- High visibility and innovative controls



OSPREY II

- GMC / Ford chassis
- Stainless steel hopper
- Oversize access doors
- Rear storage toolboxes
- High flow fan
- Maximum capacity in a low profile sweeper

Why NiteHawk Sweepers?

1



Advanced Hydraulics

Generate power and reliability where you need it most

2



"Stealth Sweeping" System

Delivers the quietest performance of any sweeper

3



Lowest Cost Of Operation

No auxiliary engine delivers performance with efficiency

4



Driver Friendly

Simple operation, training, and Non-CDL requirement

5



The Total Clean Guarantee

Here at Total Clean, you can count on professional and reliable service with the best in sweepers from trusted partners



5 *year warranty*
the longest sweeper
manufacturer warranty



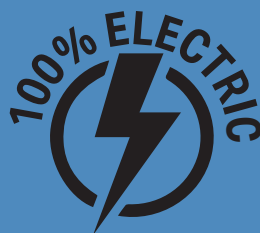


The right
solution
for every load



COLUMBIA *

UTILITY VEHICLES & CARTS



Scan To
See More



PAYLOADER

- Move up to 4 passengers
- Rated capacity up to 4,000 lbs
- Up to a 30-mile range
- Tow capacity up to 18,000 lbs
- Exceptional maneuverability



THE CHARIOT

- Move 1 operator
- Rated capacity up to 400 lbs
- Up to a 25-mile range
- Max forward speed up to 9 miles per hour



JOURNEYMAN

- Move up to 6 passengers
- Rated capacity up to 1,100 lbs
- Up to a 40-mile range
- Max forward speed up to 25 miles per hour



UTILITRUCK

- Move up to 4 passengers
- Tow capacity up to 1,500 lbs
- Tailored to fit various virtually any vehicle application



STOCKCHASER

- Move 1 operator
- Tow capacity up to 6,000 lbs
- Max forward speed up to 8.5 miles per hour



THE EXPEDITER

- Move up to 2 passengers
- Tow capacity up to 1,000 lbs
- Up to a 25-mile range
- Narrow design

*** Not Available In Northern California**

Increased Productivity

Columbia has received the highest rating possible, a 10/10, for our global warming and smog scores on the environmental performance label issued by CARB (California Air Resource Board).

① Transportation



Moving more people =
greater efficiency

② Capable



Carry larger loads even in
the tightest spaces

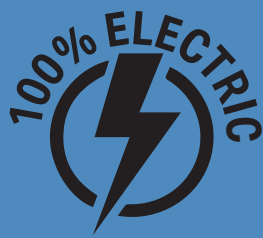
③ Economical



Built to last and afford-
able

PICKMAN *

UTILITY VEHICLES



Scan To
See More



CLASSIC

- Move up to 4 passengers
- 4,000 lbs towing capacity
- 1,400 lbs payload capacity
- Versatile truck bed measuring 63" x 48"
- Brake assist & backup camera
- Battery operated with up to 130 mile range
- 25 mph top speed



PASSENGER

- Move, carry or tow with power & efficiency
- 4,000 lbs towing capacity
- 660 lbs payload capacity
- Transport up to 4 passengers
- Battery operated with up to 130 mile range
- 25 mph top speed

 Refrigerated



MISSION

- Move, carry or tow with power & efficiency
- 4,000 lbs towing capacity
- 1,100 lbs payload capacity
- 80 ft³ cargo box with refrigeration/freezer options
- Battery operated with up to 130 mile range
- 25 mph top speed



XR 2D

- 2 door, single cab w/ dual motors
- 5,000 lbs towing capacity
- 1,400 lbs payload capacity
- All wheel drive and off-road terrain capable
- Battery operated with up to 120 mile range



XR 4D

- 4 door, dual cab w/ dual motors
- 5,000 lbs towing capacity
- 660 lbs payload capacity
- All wheel drive and off-road terrain capable
- Battery operated with up to 120 mile range

*** Not Available In Northern California**

Pick Capability. Pick Value.

The Pickman line of 100% electric utility vehicles are compact, maneuverable, and capable. With dual heavy tow load and carry capacities, these small electric vehicles will be the workhorse of your fleet.

1

Heavy Loads



Towing capacities up to
5,000 lbs

2

Compact



Carry larger loads even in
the tightest spaces

3

Comfortable



Enclosed cabs with A/C
and a media player

When
versatility
matters



HYDROTEK

PRESSURE WASHERS

Scan To
See More



SC SERIES

- Heavy-duty fuel tanks
- Total relief unloader
- Belt driven pump
- SpirLast™ coil and heating sys.



HP SERIES

- High heat & high flow system
- Autostart
- Time delay shut down
- Stainless steel housing frame



CPX SERIES

- High output engines
- Steel control panel
- Remote fuel tank
- Belt guard



CPS SERIES

- Panel mounted unloader
- Belt drive pump
- Includes nozzles with insulated quick couplers



HYDROTEK TANK SKID

- Easy 4-bolt installation
- Securely attach to any vehicle
- Compact design
- "BOLT & Go" convenience



HD SERIES / SS SERIES

- Adjustable temperature
- Safety relief valve
- Heavy-duty industrial motor
- Downstream chemical injection



PORTABLE RECYCLE SYS.

- Automatic pump-out
- Stainless vacuum scupper
- Vacuum recovery, 12 GPM
- Oil-absorbing shock



SURFACE CLEANERS

- High cleaning speed
- Works with hot and cold water
- Effectively removes grease
- Gets the job done quickly



PORTABLE TRAILER

- Powder-coated steel frame
- High capacity water filter
- Water-tight seal
- Torsion axles



PORTABLE

Our pressure washers are compact and are easy to transport and maneuver through spaces worry-free.



DURABLE

Built to last with stainless-steel construction and special Spiralast™ heating coils.



SUSTAINABLE

HydroTek pressure washers are made to clean without chemicals or detergents. No chemicals mean fewer environmental disposal and recycling issues.



RELIABLE

Clean more surface area without hunting for water to refill the tank! Efficiency, more volume, fewer trips.

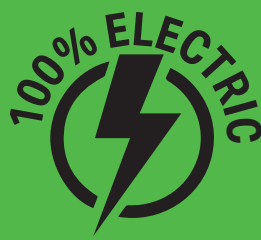


6½ hours
for a full charge

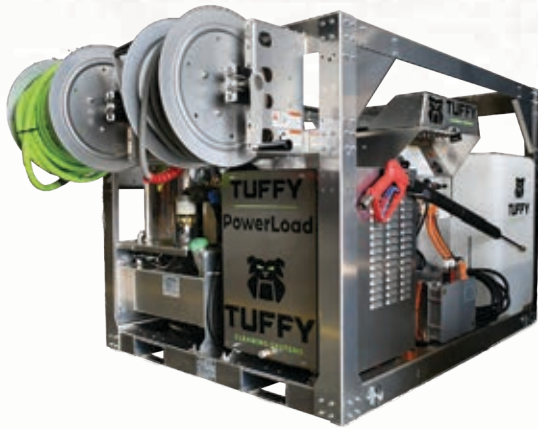


TUFFY

ELECTRIC PRESSURE WASHER



Scan To
See More



Tuffy PowerLoad Skid

- Full day of work on a single charge
- Designed to fit any half ton pickup box (64"L 48"W)
- Diesel hot water burner available
- 100 gallon water tank



Tuffy PowerLoad Trailer

- Aluminum tandem axle trailer with electric brakes
- 200 gallon tank
- 2 hose reels with 100 ft of high pressure hose & 100 ft of inlet fill hose
- Diesel heated coil is cool to the touch to prevent burns

Key Features

- Integrated charging system
- Full charge in 6.5 Hours (230v)
- Charge on standard outlets
- Water conserving modes
- Up to 4 gpm at 4000 psi
- Multiple flow and pressure settings to optimize your cleaning needs
- 100 gal water tank with automatic fill
- Aluminum construction
- Low water shutdown

Standard accessories include:

- Low pressure fill hose & hose reel
- High pressure fill hose & hose reel
- Wand, trigger gun, & nozzle set

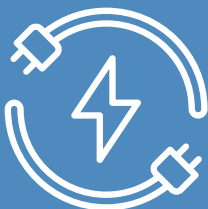
Custom Mounting

Customize your equipment to your needs to make your facility or business as efficient as possible. Tuffy Cleaning Systems is known for its clean, user-friendly, and innovative design.



Eco-conscious Industrial Cleaning

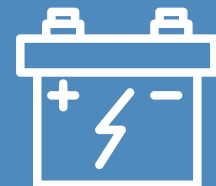
With a focus on sustainability and innovation, this powerhouse stands out as a solution in the world of industrial pressure washing equipment. This groundbreaking technology not only offers exceptional cleaning performance but also contributes to a greener and more sustainable future.



All Electric



Zero Emissions



Battery Powered

MADVAC *

OUTDOOR VACUUM SWEEPERS

Scan To
See More



LS175

- High profile approach to cost effective vacuuming
- 2000 CFM rating
- High dumping 1.75 yd³ hopper
- 2 gpm at 1800 psi super wash
- No CDL required



LR50

- 48" wide all-terrain litter picker
- Compacts litter 2:1 ratio
- 15 ft wander hose
- Intuitive arm control with 6-position robotic joystick
- No CDL required



LN50

- All terrain litter picker
- Diesel powered
- 48" wide for narrow spaces
- Compacts litter 2:1 ratio
- 15 ft wander hose
- No CDL required



LS125 E

- 48" wide, high-dump sweeper
- 12 ft retractable wander hose
- Industry leading 2350 CFM rating
- High dumping 1.25 yd³ hopper
- No CDL required



LR50 E

- 9 hours of runtime on a 5 hour charge
- Cleans up to 84,480 ft² per hour
- 75 gallon litter capacity
- No CDL required



LN50 E

- 9 hours of runtime on a charge
- Reduce GHG by 17 tons a year
- Lower dB than LN50 diesel
- Collect wet or dry litter
- 14" diameter vacuum fan
- No CDL required



LP61-G

- Skid or trailer mounted
- Vanguard 400 engine
- Industry leading 2200 CFM vacuum rating
- Bottom-mounted fan eliminates jamming
- Optional 15' or 25' hose extension

** Not Available In Northern California*

Keep your city
clean
and green



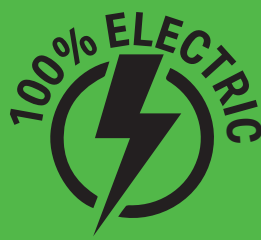


5 *times more
productive*
than manual cleaning



GLUTTON

OUTDOOR VACUUM SWEEPER



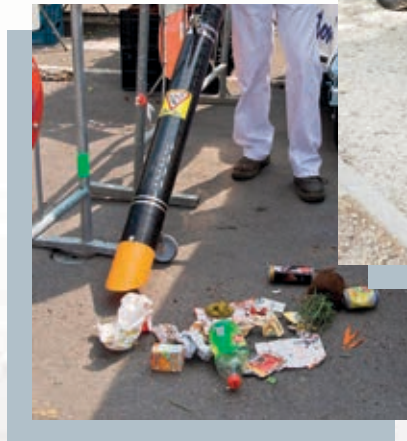
Scan To
See More



Sucks litter up to 5"

GLUTTON COLLECT

- 100% electric powered
- Up to 16 hours of battery life
- Compact, maneuverable, and self-propelled to climb steep sloped & uneven terrain
- 24 M2 Glutton dust filter
- High suction power and variable speed
- Easily mounts curbs up to 8" tall
- Built-in IP67 waterproof charger



Why Use Glutton Collect?

Faster

- Mobile, highly maneuverable and motorized
- Suited for industrial and urban waste
- 63 gallon container to hold more debris
- Wide floor nozzle and 1" narrow nozzle options for further capabilities

Easier

- Wireless, maintenance-free ergonomic handle
- 5" carbon fiber hose for collecting large debris
- Removable, stainless steel anti-clogging grid

Cleaner

- 100% electric, no CO₂ emissions
- 258 ft² (24 M2) dust filter is ISO5011 compliant, trapping 99.96% of particles over 0.5 microns
- Less noise pollution with near silent operation

Safer

- No contact with potential hazards
- Crush prevention safety system
- Puncture proof tires



Contact us today!
800.200.3432



HAAKER

www.totalcleanequip.com

clean until
L CLEAN!

REPAIRS *maintenance* TOTAL SUPPORT

Fully-trained
technicians



\$ Over \$2.5M dollars in
parts inventory

- OEM Parts
- Sweeping & Scrubbing Brushes
- Detergents & Cleaning Chemicals
- Technical Assistance
- Preventative Maintenance



RENTALS

DAY, WEEK, & MONTH CONTRACTS

scan here →
to view our rental fleet



SW8000

- Heavy-duty, outdoor sweeper
- Up to 77" sweeping path
- Dust Guard™ fog system
- 60" multilevel high dump



ATLAS

- 64" sweep path
- 60" multilevel high dump
- Safety vision dump window
- Power control dust collection system
- Heavy-duty design



7765

- Large sweep & scrub path
- 100-gallon recovery/solution tanks
- Designed for up to 600 lbs of downward brush pressure



NAUTILUS

- Easy access hopper
- Adjustable squeegee feature
- Edge scrubbing
- Stainless steel scrub deck
- LPG, gas, diesel, or electric powered





SC6000

- SmartFlow™ technology
- Maximum operator safety
- No tools - Brush/Squeegee change
- SmartKey™ system



SCRUBMASTER

- No tools - Brush/Squeegee change
- Stainless steel components
- Onboard diagnostics
- One-touch all function buttons



MOUNTED PRESSURE WASHER TRAILER

- Powder-coated steel frame
- Torflex axles
- High capacity water filter
- Customize with your choice of accessories
- Integrated storage tube



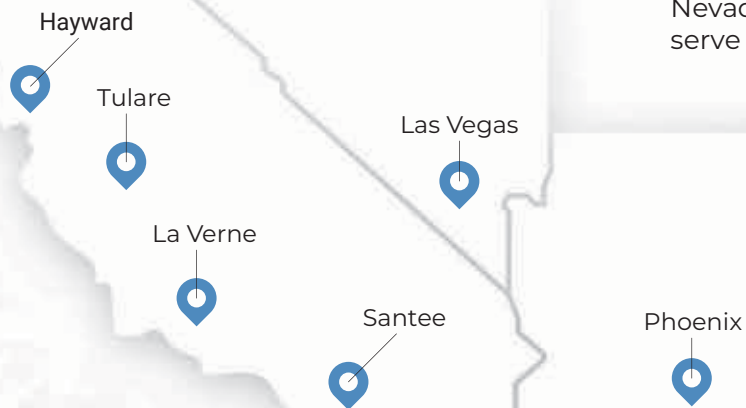
WALK-BEHIND

- Cylindrical/Disc brushes
- Dual brush motors
- Direct brush release system
- Easy, ergonomic operation

At Total Clean Equipment,
you can trust that our machines are
easy-to-operate and perform at the
highest standards every time.

Location Is Everything

Your equipment is only as good as the people and resources that stand behind it. Rest assured, HAAKER Total Clean has facilities, expertise, and inventory strategically deployed across California, Nevada, and Arizona to serve you.





Los Angeles

2070 N. White Ave.
La Verne, CA 91750
(909) 598-2706



Central Valley

4490 South K St.
Tulare, CA 93274
(559) 220-8897



Phoenix

2940 W. Virginia Ave.
Phoenix, AZ 85009
(602) 266-8214




San Diego

9465 Mission Park Place
Santee, CA 92071
(619) 569-1946



Las Vegas

4645 Copper Sage St.
Las Vegas, NV 89115
(702) 639-0156



Northern California

3624 Munster Ave., Unit A
Hayward, CA 94545





(800) 200-3432
www.totalcleanequip.com